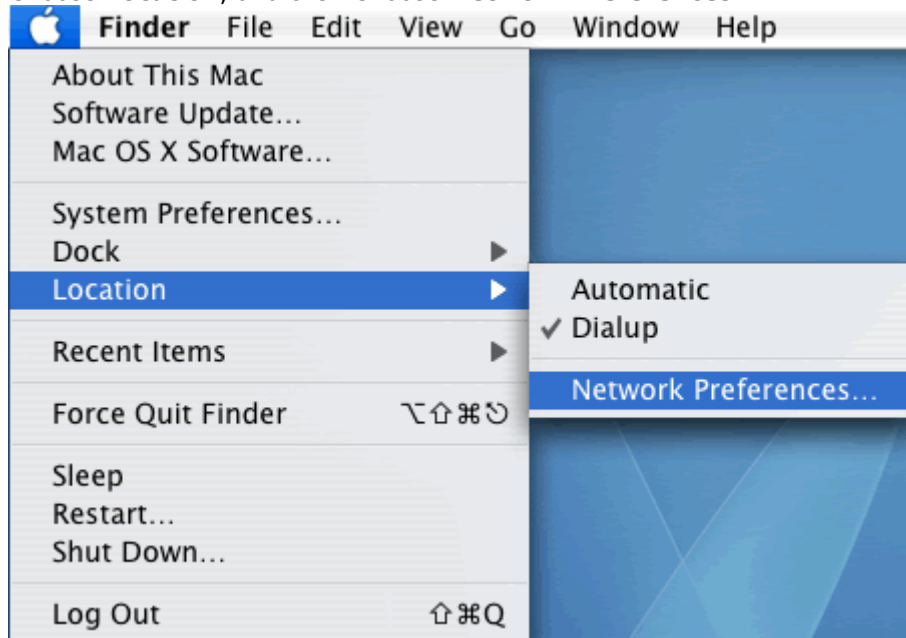




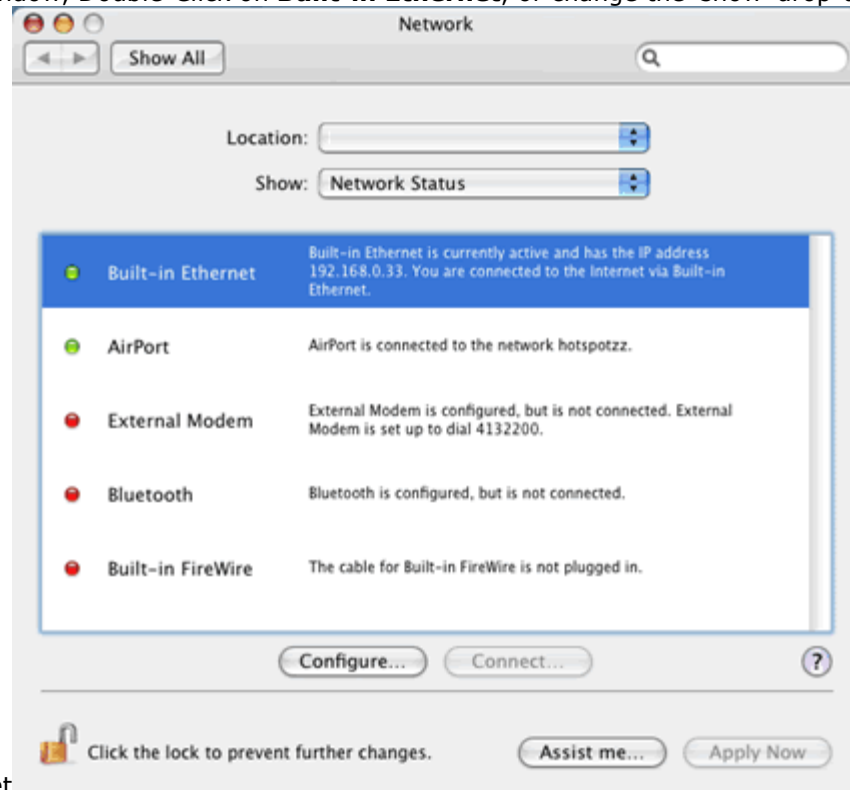
## MAC (OS X) PPPoE Connection Setup

Click the **Apple** menu at the top left of the screen.

Choose **Location**, and then Choose **Network Preferences**

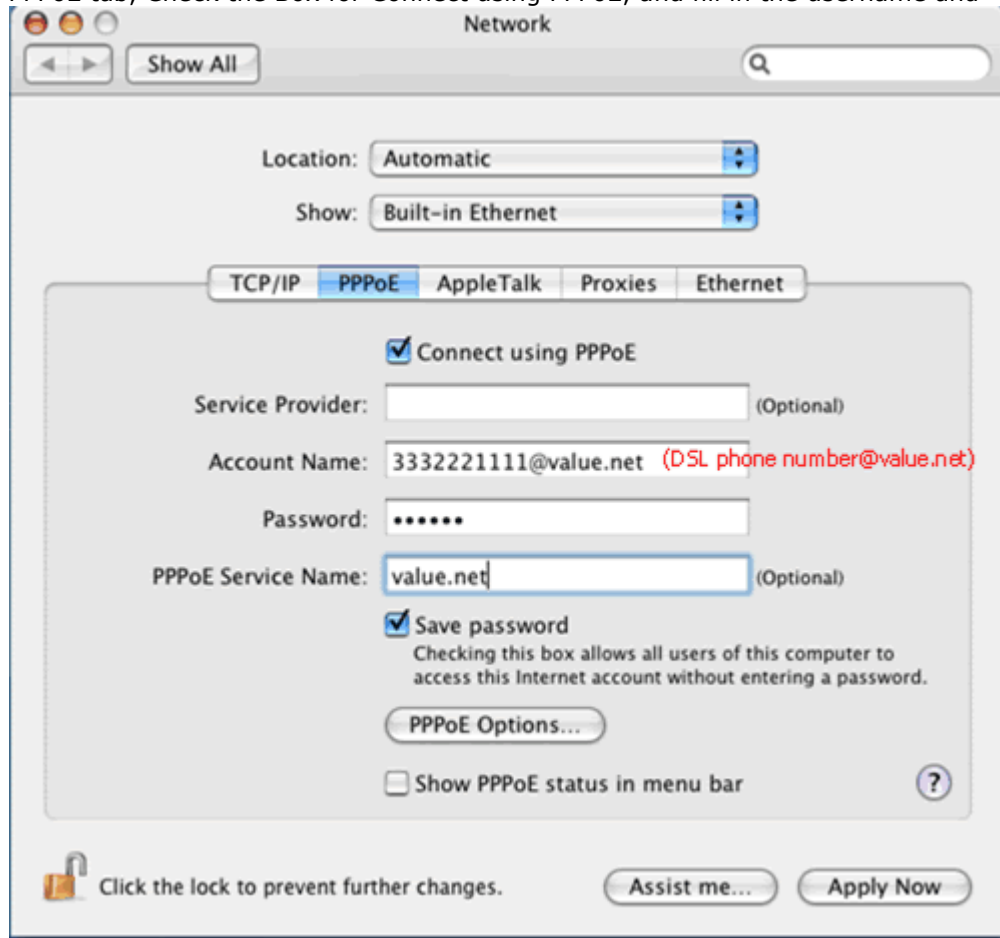


In the Network window, Double-Click on **Built-in Ethernet**, or change the 'show' drop-down



to Built-in Ethernet

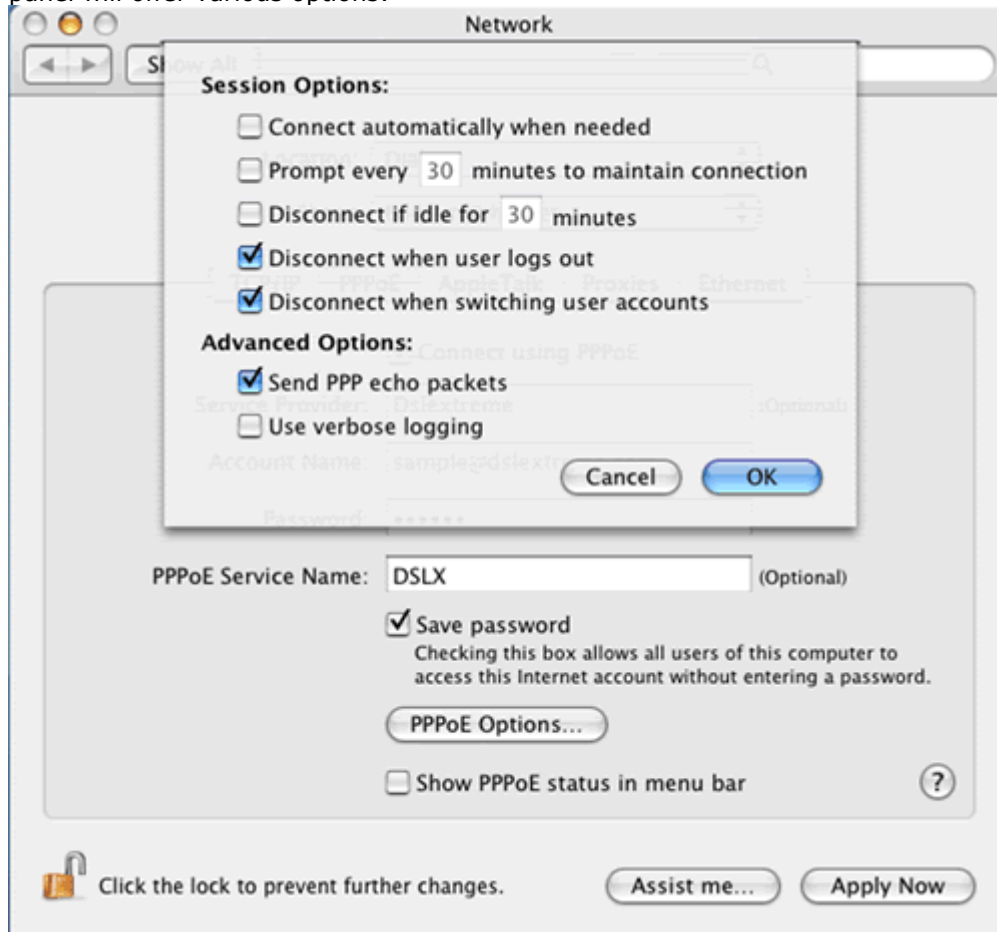
Select the PPPoE tab, Check the Box for Connect using PPPoE, and fill in the username and



password.

You can also configure additional session options, such as automatic connection, idle timeouts, and disconnect options by clicking on the **PPP Options** button at the bottom of the window. A

panel will offer various options:



You may also wish to configure the TCP/IP settings, such as DNS server addresses. To do this, click on the TCP/IP tab. Ensure that Configure using PPP is selected, and enter the DNS servers in the space provided.  
(Southern California 66.51.205.100 and 66.51.206.100 & Northern California 66.218.44.5

and 66.218.44.90)

