



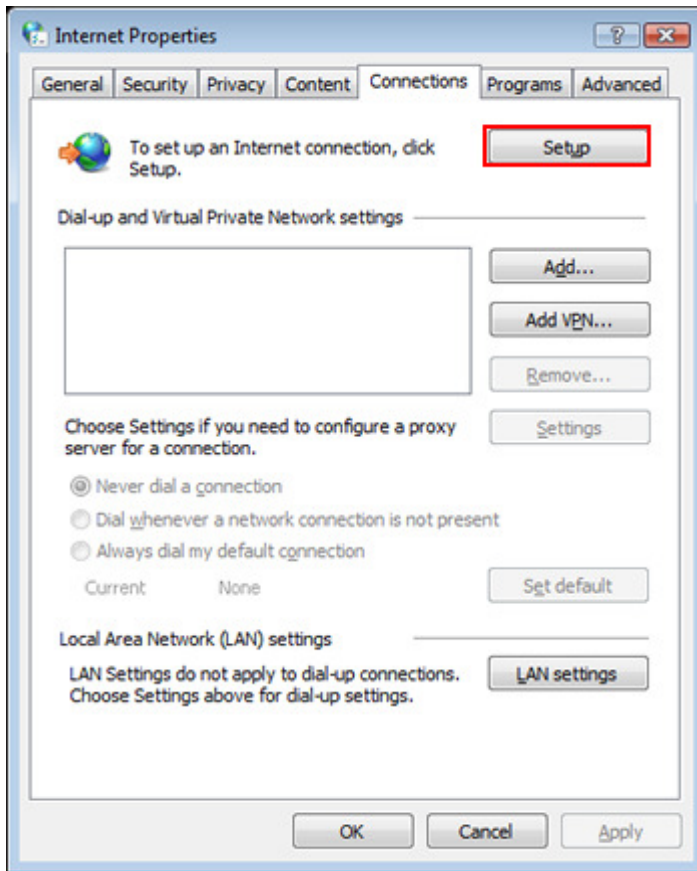
Windows Vista PPPoE Client Setup

This knowledge base article will outline the steps necessary to setup Windows Vista for a PPPoE (dynamic IP) DSL connection.

Start by opening Internet Options.

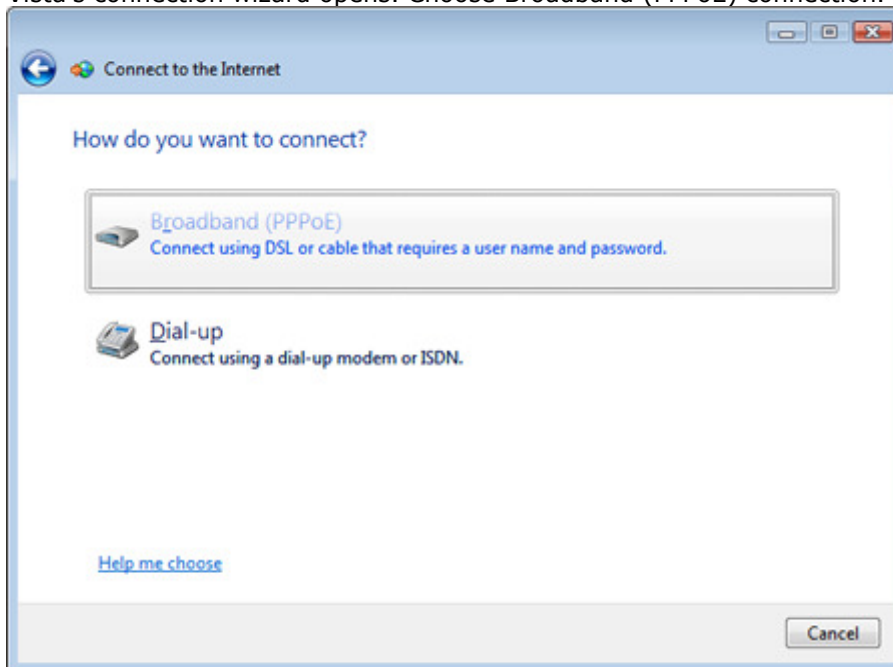
- In Internet Explorer, Click **Tools** and then **Internet Options** *or*
- Find the Internet Options icon in the Control Panel. (in Vista this is easier if switched to 'classic view') *or*
- Right click Internet Explorer on the desktop or in the start menu and choose properties
or
 - (may not work, as you might get 'shortcut properties' in some instances.)
- From a run prompt type *inetctl.cpl*
 - (search box in the 'start menu' works as a run prompt, or WindowsKey-R brings a run prompt)

In Internet Options, Select the Connections tab, then click the Setup Button



You may be prompted that the computer is already connected to the Internet (if they are, through another connection); if so, choose to *set up connection anyway*

Vista's connection wizard opens. Choose Broadband (PPPoE) connection.



The next screen will let you input PPPoE settings.
Enter Username(including the @value.net) and Password. Set connection name to DSL
Extreme.

Checking 'Allow other people to use this connection' is recommended.



Connect to the Internet

Type the information from your Internet service provider (ISP)

User name: dslphone#@value.net

Password: ●●●●●●

Show characters

Remember this password

Connection name: value.net

Allow other people to use this connection
This option allows anyone with access to this computer to use this connection.

[I don't have an ISP](#)

Connect Cancel

Click the Connect button and Vista will verify the connection. After it has finished this process, click the close button. To utilize this connection, click the Start button, select Connect To and select the connection labeled value.net.