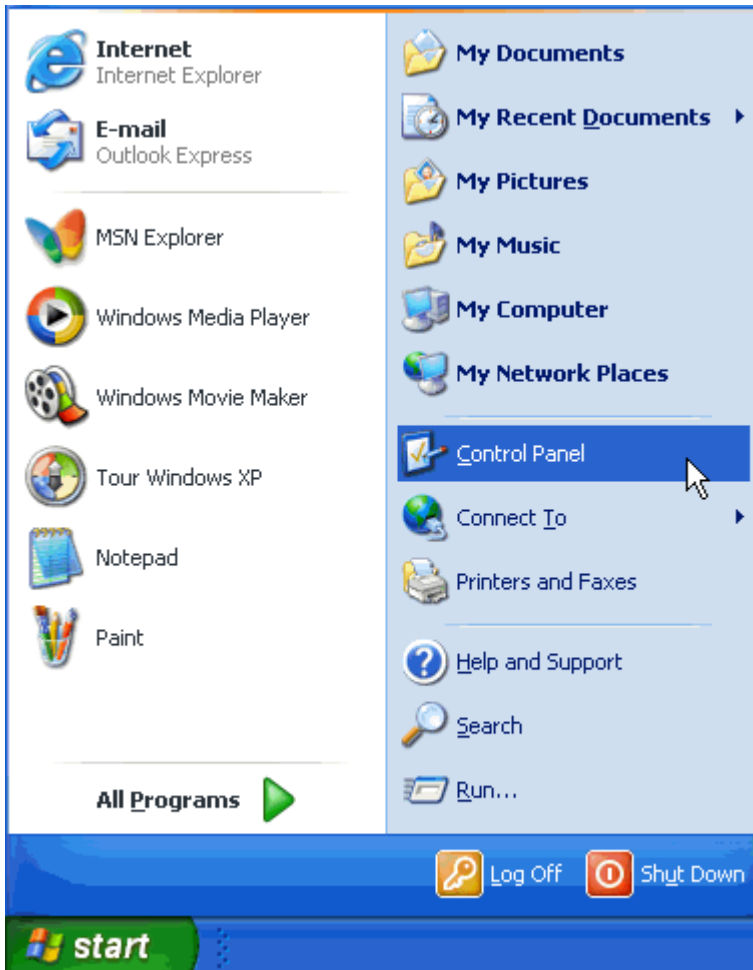


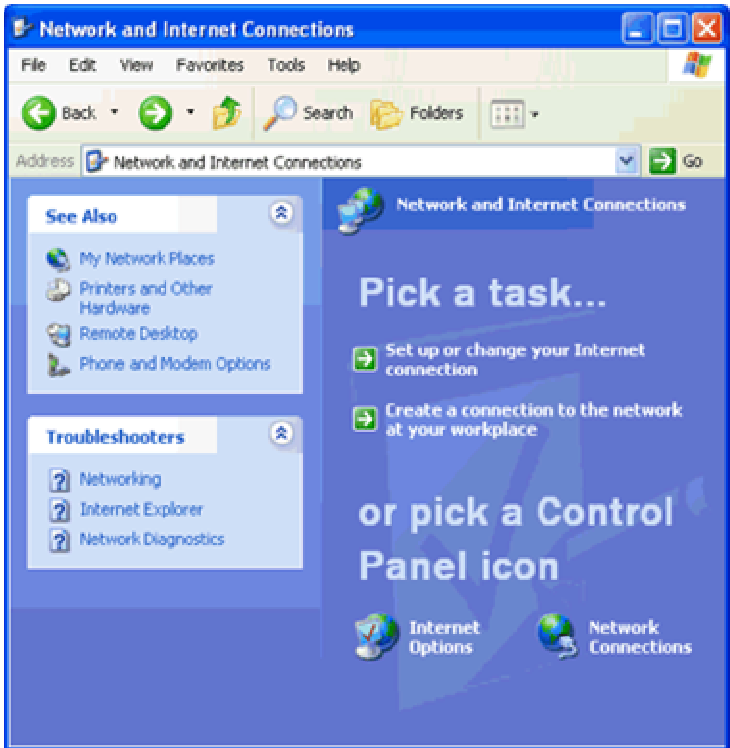
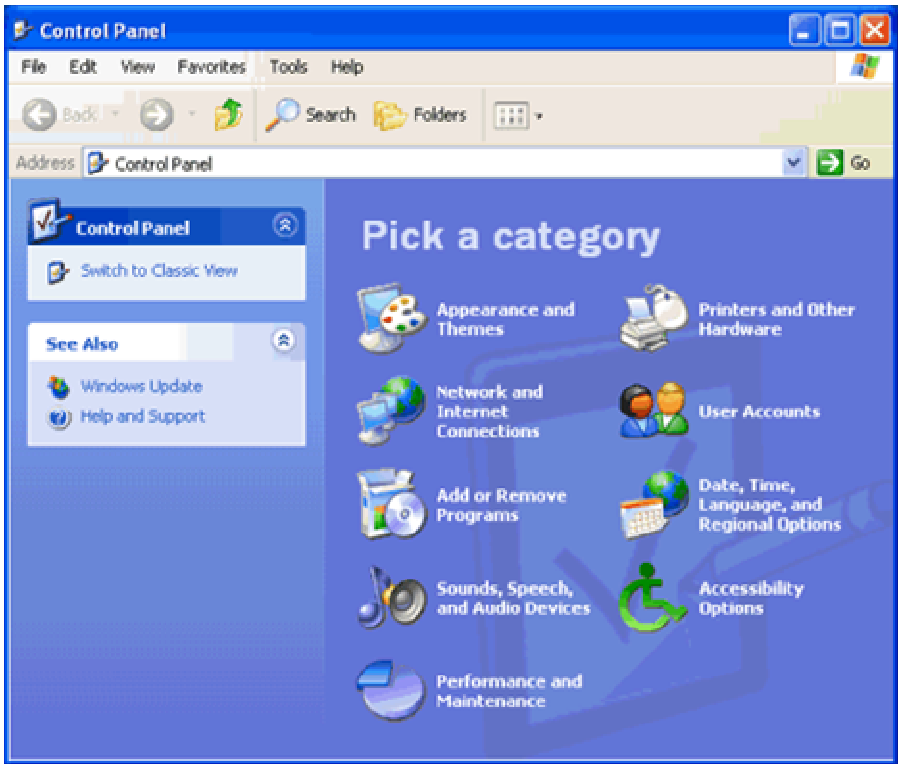


Windows XP PPPoE Client Setup

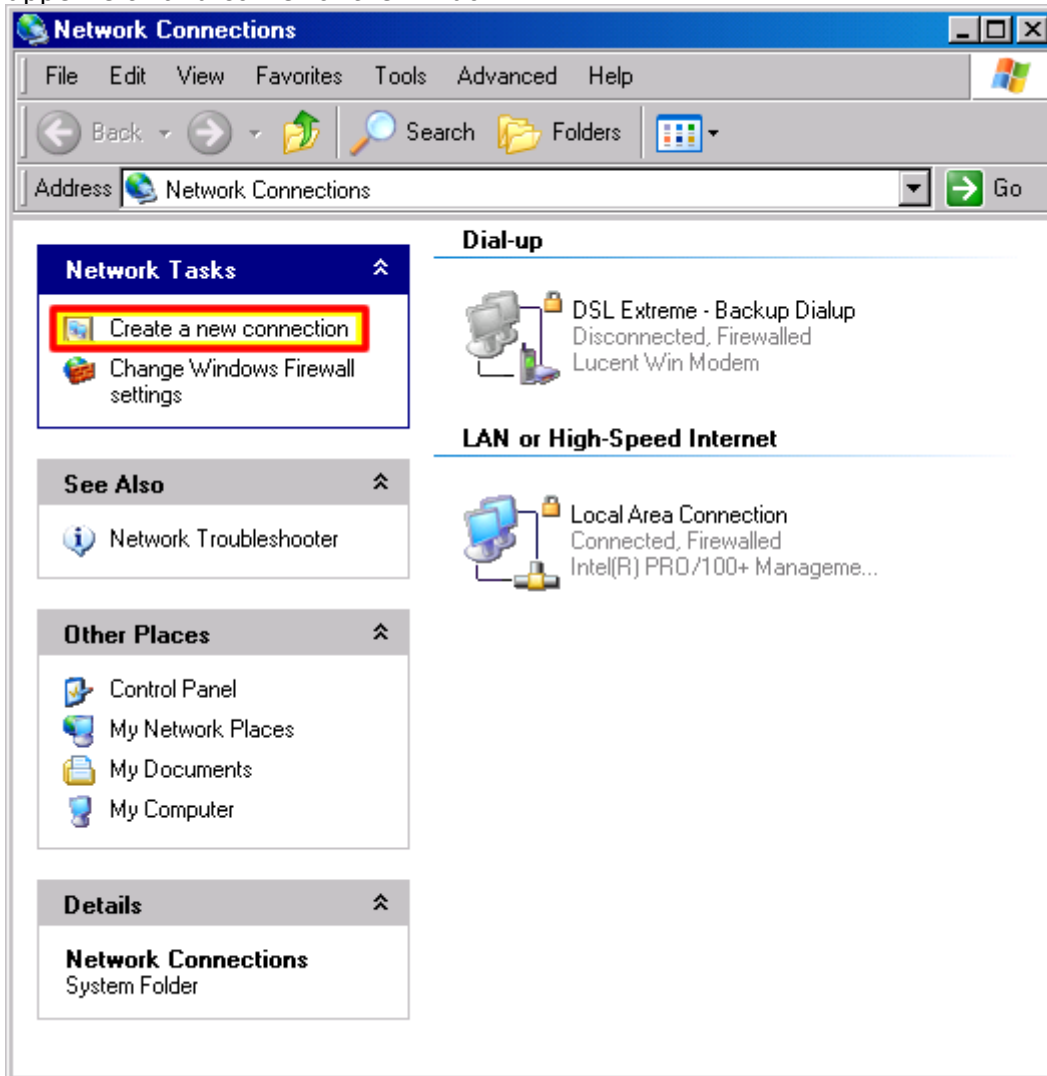
This knowledge base article will outline the steps necessary to setup Windows XP for a PPPoE (dynamic IP) DSL connection.

Click on the start button then go to control panel>network connections.

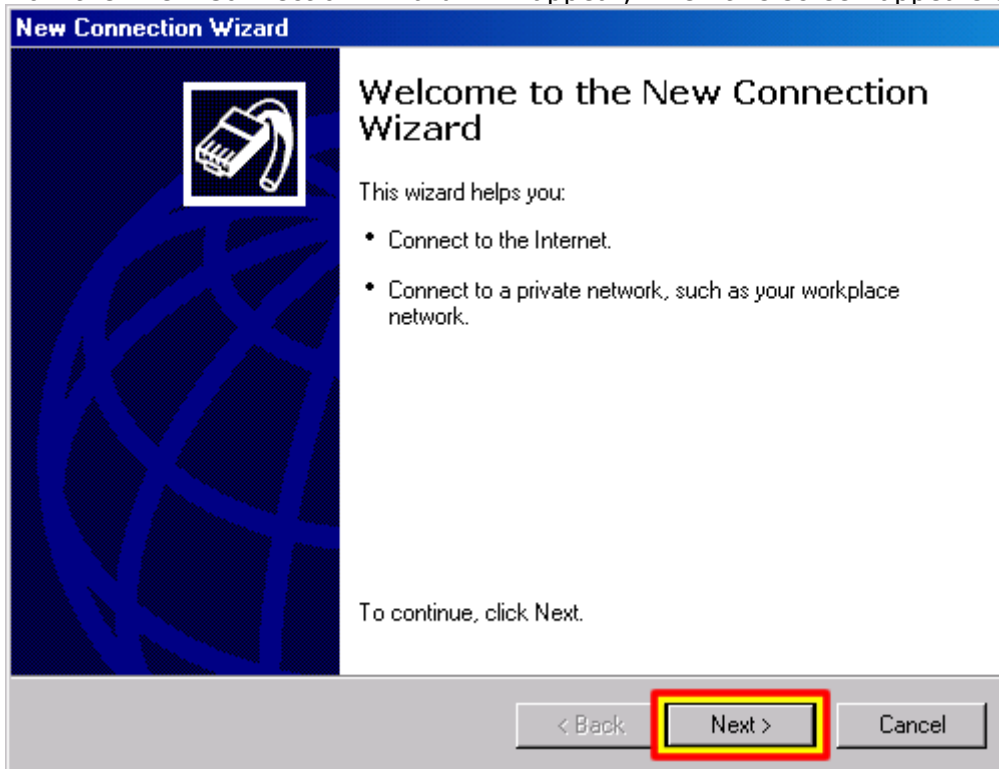




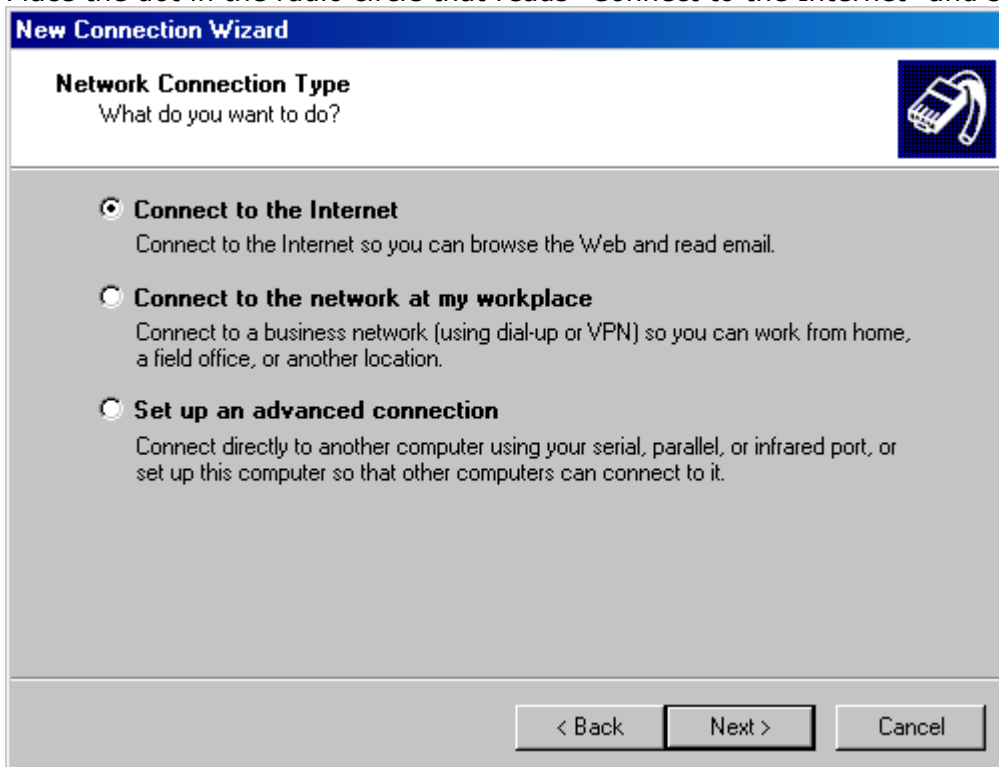
Once in network connections click on the "create a new connection" option in the upper left hand corner of the window.



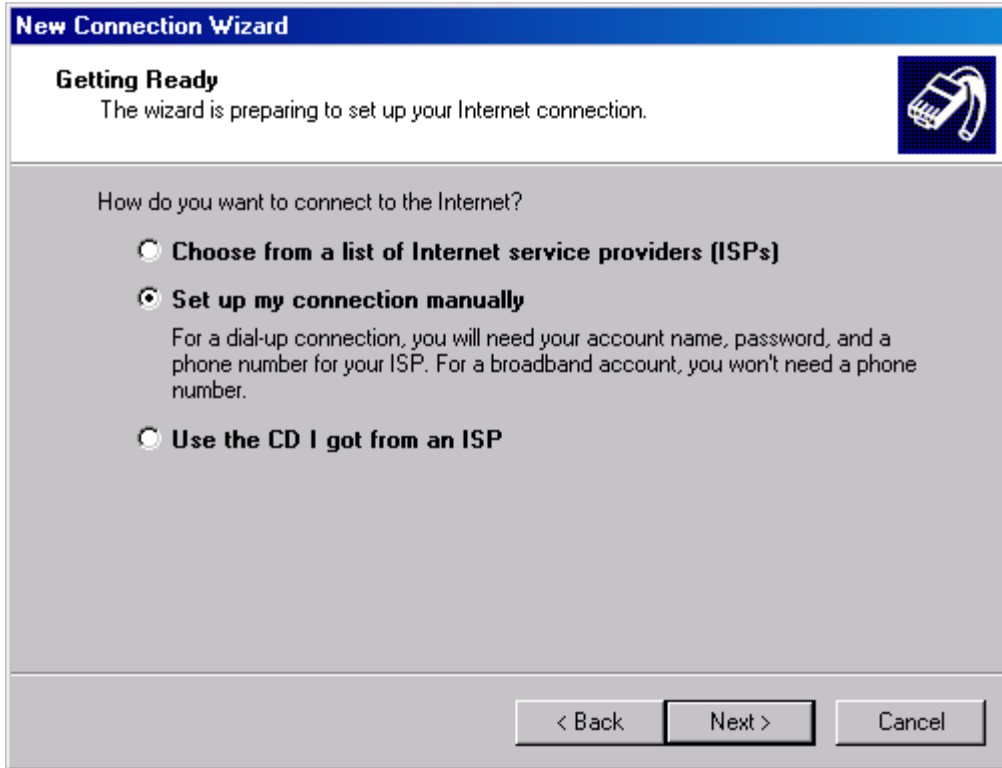
Now the "New Connection Wizard" will appear, when this screen appears select next.



Place the dot in the radio circle that reads "Connect to the Internet" and select next



Next place the dot in the radio circle that reads "Setup my connection manually" and select next.




A PPPoE (dynamic IP) connection requires a user name and password. So now place the dot in the radio circle that reads "Connect using a broadband connection that

requires a user name and password" and select next.

New Connection Wizard

Internet Connection
How do you want to connect to the Internet?




- Connect using a dial-up modem**
This type of connection uses a modem and a regular or ISDN phone line.
- Connect using a broadband connection that requires a user name and password**
This is a high-speed connection using either a DSL or cable modem. Your ISP may refer to this type of connection as PPPoE.
- Connect using a broadband connection that is always on**
This is a high-speed connection using either a cable modem, DSL or LAN connection. It is always active, and doesn't require you to sign in.

< Back Next > Cancel

The wizard will now ask for a name for the connection. Type a name into the box and then select next.

New Connection Wizard

Connection Name 

What is the name of the service that provides your Internet connection?

Type the name of your ISP in the following box.

ISP Name

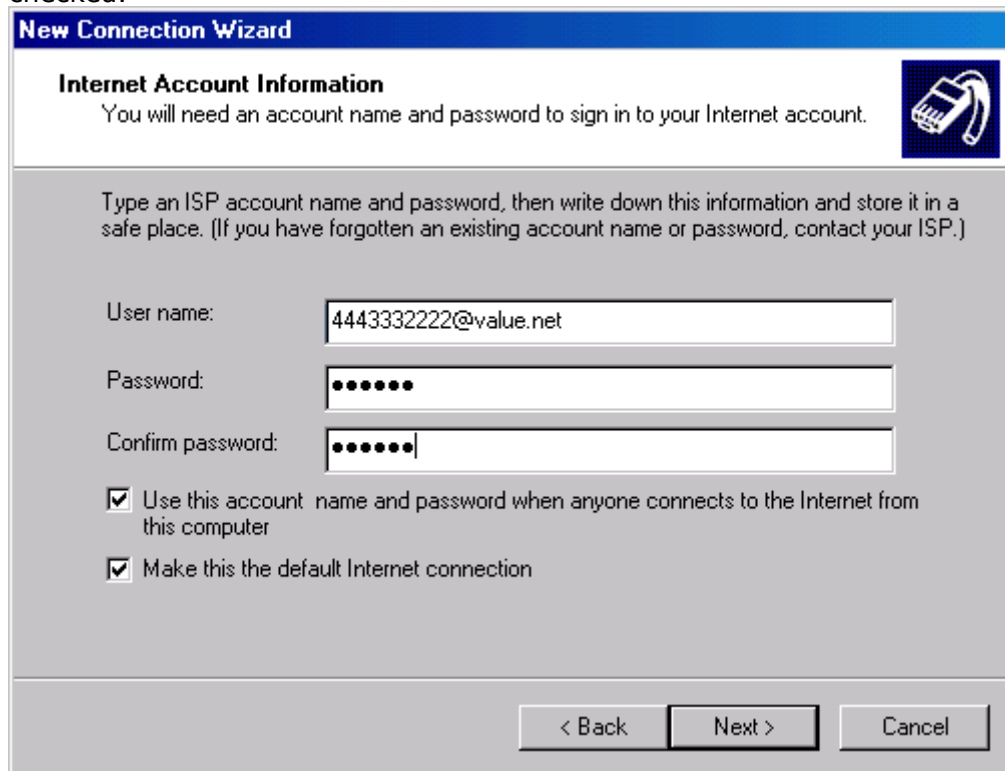
Value

The name you type here will be the name of the connection you are creating.

< Back Next > Cancel

The wizard will now require you to enter a user name and password. Enter `{dslphonenumber}@value.net` for the user name (example: `3332221111@value.net`). You must now also decide who will be able to use the connection by either checking the first box or not. These check boxes are usually

checked.



New Connection Wizard

Internet Account Information
You will need an account name and password to sign in to your Internet account.

Type an ISP account name and password, then write down this information and store it in a safe place. (If you have forgotten an existing account name or password, contact your ISP.)

User name:

Password:

Confirm password:

Use this account name and password when anyone connects to the Internet from this computer

Make this the default Internet connection

< Back Next > Cancel

Congratulations! You have successfully configured windows XP for a PPPoE connection. All that is left to do is place a check mark in the box that says "add a

shortcut to this connection to my desktop" and click next.



NOTE: In order to make use of your newly created PPPoE connection, simply click on the shortcut on your desktop and then click connect. Leave the password field the

way it is.



If you selected "use this account name and password when anyone connects to the Internet from this computer" in step 8, the connection screen will have a dot on "anyone who uses this computer". If you want it set to "Me only", you will have to create a new connection again and this time do not check "use this account name and password when anyone connects to the Internet from this computer" in step 8 of this document.

If you try to change it on the connection window you will get a username and or password error!